

# SINGLE-TRACK ELECTRIC TROLLEY

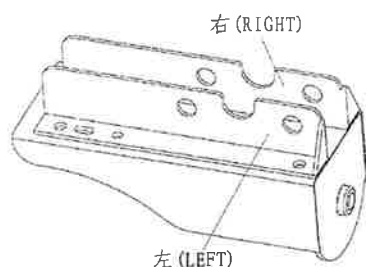


Fig.1

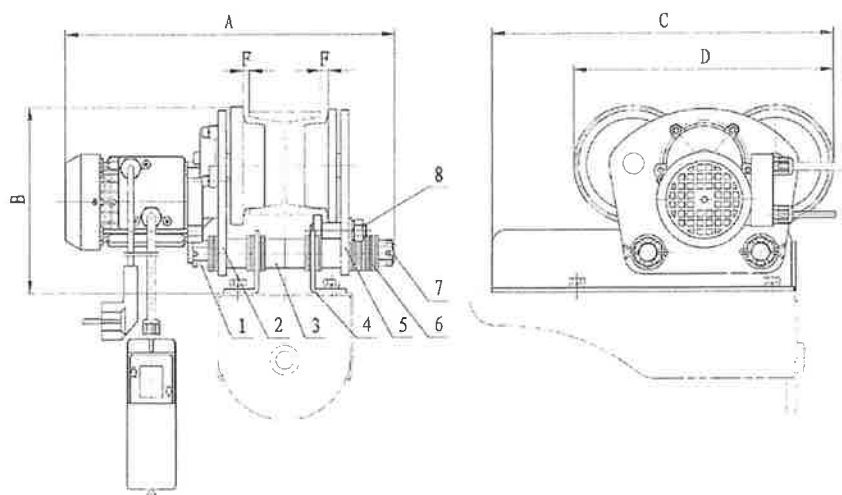


Fig.2

## ● USAGE

TD series Single-Track Electric Trolley, driven by motor. Moving on the track of "I" steel beam, with power-driven lifting hoist or manual hoist to form a lifting machinery of Bridge Model, Single-beam Model and Rotary Arm Model, is widely used for assembling machinery equipments. Lifting and moving goods etc. In factories, mines, wharves, warehouses and building yards.

## ● FEATURES

1. Small volume easy to assemble.
2. Save your energy while handling, it is convenient for you to maintain.
3. Can move on crooked track (miniradius of crooded track which can pass is 1m).
4. Easy to adjust the space between trolley wheels, so it can suitable for a various of Model "I" steel beam.

## ● ASSEMBLY

1. According to the Figure 1 shows, installation the PA200 - PA1000 electric hoist which we produced in the left, right hoist connector(4)(note: the left, right connector is different).
2. See Figure 2, loose the nut (1) which in the right main frame(5) side out of the connecting shaft(7), remove the right main frame, spacers(3), etc. T hen place the hoist connector(4) into the connecting shaft according the figure shows(note: **load spacers and appropriate washers(6) between the left, right hoist connector**).
3. Put the road wheel which in the left main frame(2) side on the lower edge of "I" steel beam, then place the right main frame into the connecting shaft, and making the right road wheel rested on the other side of the "I" steel beam(note: **place the washers inside or outside of the main frame to make clearance "F" = 1.5 ~ 2 mm**), then screw on nut (not screw up). Hang light load to test run, while the wheel adjust to contact the track of the "I" steel beam, clamp the balance(8) (to make the bearing on the bottom of the "I" steel beam ,then tighten the lateral nut). Tighten the nuts on the both sides of the connecting shaft. lastly insert the split pin.

4. Hang rated loading, make sure no abnormalities in the whole moving track several times, then can use formal.

## Note:

An optional five-hole hook plate(9) available can install as figure 3, figure 4, figure 5.

## ● HANDLE

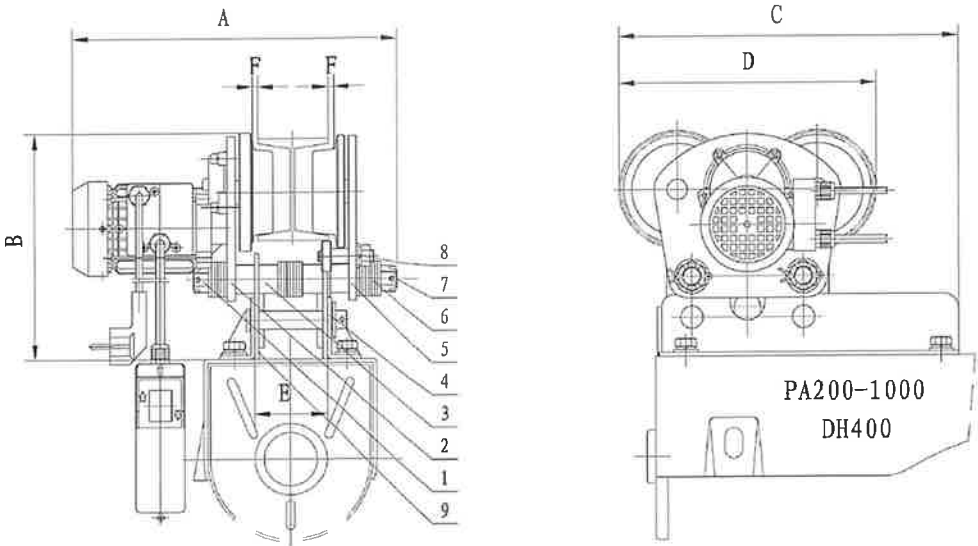
1. Overloading is forbidden.
2. Forbid walking or working under the goods while it's lifting and moving.
3. Make sure gravity of good must be in the same plane with "I" steel beam or do not lift.
4. If something abnormal found while lifting and moving, stop it immediately and check it.
5. Periodically add lubrication oil to gear, check every fastening and fixing components.
6. Any "I" steel beam which has warped, torque, cracked or it does not conform to standards can't be used as single track for Electric Trolley.

## ● TECHNICAL DATA LIST

Specification		TD1	
Rated loading weight (kg)		999	
Assembling height (m)		3	
Rated volt (V)		230V/50Hz	120V/60Hz
Input power (W)		200	220
Moving speed (m/min)		16	16.4
Mini-radius of crooked track which can pass(m)		1	
Main measurement	A (mm)	312	
	B (mm)	181	
	C (mm)	332	
	D (mm)	253	
"I" steel beam recommended	Model of steel beam	10-22	
	Width of track (mm)	68-110	
N.W (kg)		14	

# SINGLE-TRACK ELECTRIC TROLLEY

Fig. 3



E: PA200-300 (50) 、 PA400-800 (60) 、 PA1000 (70) 、 DH400 (40)

Fig. 4

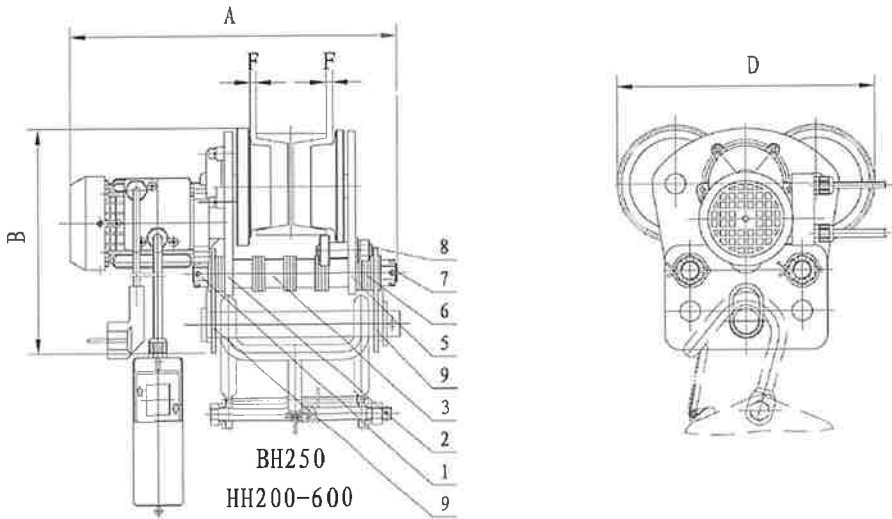


Fig. 5

